

Customer :

customer

Customer part :

customer part

Comment :

Comment

S1=0.02

S2=0.09

Tmax=443

Tp S2=482.0

PI=0.15

HI=50

Sample =4617.98

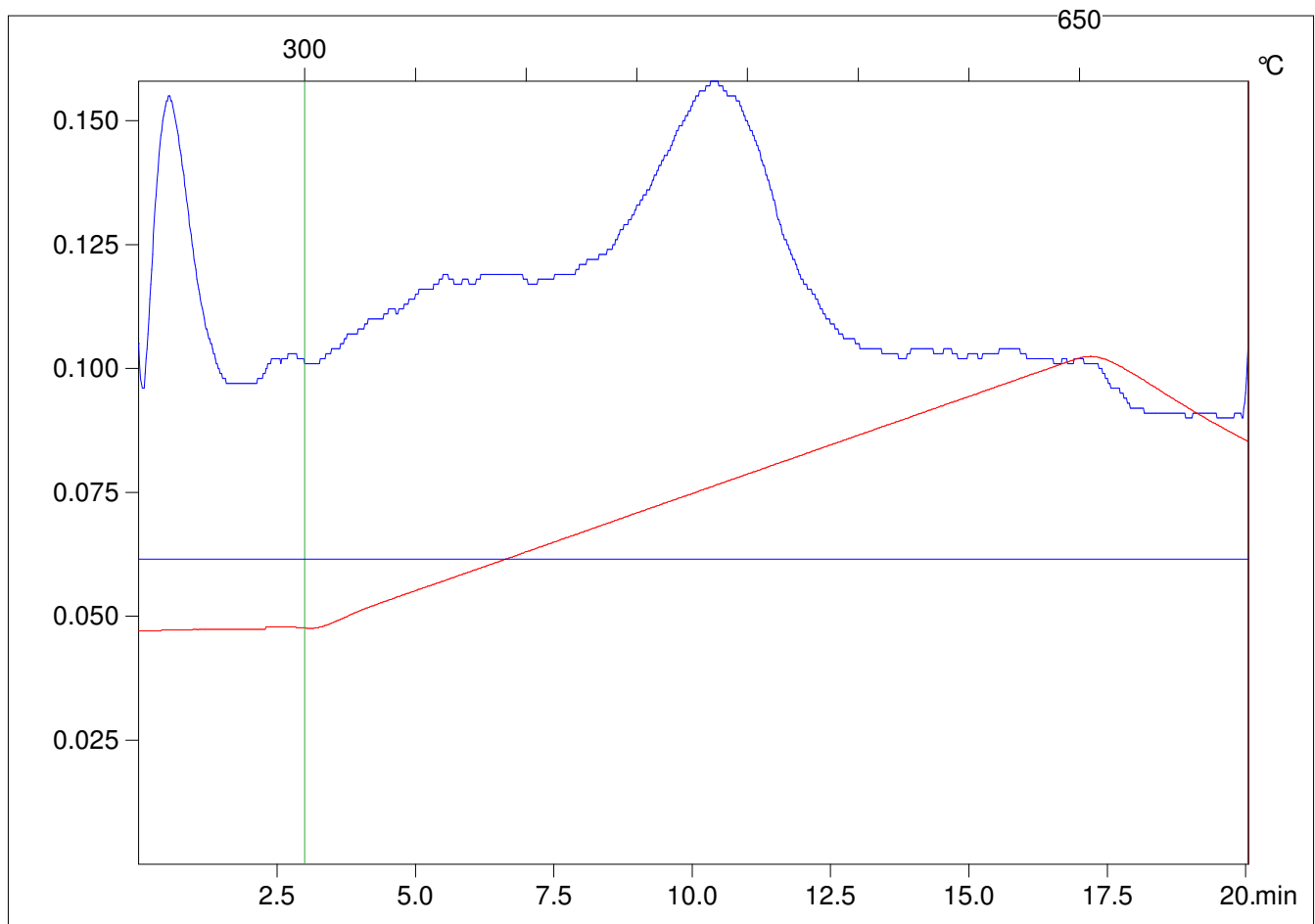
Method =Bulk Rock

Cycle=Basic

KFID(10\*9)=1167

Qty =70.1

TOC=0.18



C:\VINC\PK141021\PK028.R00 : FID pyrolysis graphic

State

Pyro Status

Oxi Status